

## **REGIONAL WORKSHOP**

**“DEVELOPMENT CHALLENGES OF MINE  
CLEARANCE AND VICTIM ASSISTANCE  
IN SOUTH-EAST ASIA”**

**BANGKOK, 30 AUGUST 2004**

*Cambodia Case Presentation*

*“ The Mine Problem – National  
Planning and Prioritizing*

*Communicating Elements of Plans to  
implement Article 5 of the  
Ottawa Convention*

*1- Situation Analysis*

*Background*

**Impact of the problem on local communities**

- **13,908 villages has been surveyed**
  - **3,000 suspected areas, with 300 cluster bombs**
  - **11,400 UXO spots more than 5,500 villages have UXO scattered on their land**
  - **446,600 ha. Suspected areas**
  - **more than 5,000,000 people are at risk**
  - **60,289 mine/Uxo casualties recorded for the years 1979-2003**
  - **continue injuries or killed over 800 a year**

## *How Does Cambodia Responded*

### *To date*

- The RGC is committed to the Ottawa Convention
- National Law on Ban of landmine
- Four main operators work in Cambodia: CMAC, HALO Trust, MAG, RCAF
- Establishment of the CMAA
- Establishment of the MRE focal point
- Establishment of socio-economic management on mine clearance operation guideline and regulation
- Coordination MoSAYR & DAC
- Cambodian Red Cross – CMVI
- Cambodian *Millennium Development Goals* of the United Nations in 2003, as a 9<sup>th</sup> Goal

## *Current Situation & Progress*

<b>Progress 1992 – 2003</b>	<b>251,720,000 m<sup>2</sup></b>
- CMAC	112,030,000 m <sup>2</sup>
- MAG	10,590,000 m <sup>2</sup>
- HALO Trust	25,490,000 m <sup>2</sup>
- RCAF	84,320,000 m <sup>2</sup>
• Clearance	
- APM	419,794
- UXO	949,922
- ATM	12,633

## *2- Vision*

The Kingdom of Cambodia vision for mine action is to carry out the compliance with Convention obligations and to keep on moving towards zero impact by 2012 from mines by clearing contaminated areas and by developing intensive mine risk education with the increasing support of a national capacity.

## *3- Strategic Objectives 2005-2009*

- 1. Objective related to National Coordination**
- 2. Objective(s) related to surveying, marking, monitoring and protecting from civilian access mined or suspected areas**
- 3. Objective related to mine risk education**
- 4. Objective(s) related to clearing mined areas**
- 5. Objective related to Victim Assistance**

## *4- Implementation Mechanisms*

- Coordination mechanisms
- Resource mobilisation mechanisms
- Planning, monitoring and evaluation mechanisms
- Linkages to national development mechanisms

## *5- Implementation Plan 2005-2009*

### *➤ 3.1 Objective related to National Coordination*

**To ensure the effectiveness of the national coordination efforts with the relevant ministries, demining agencies and all stakeholders**

- *Objectives related to surveying, marking, monitoring and protecting from civilian access mined or suspected areas*
  - **3.2.1 To reduce the number and size of the suspected mined areas from 2005**
  - **3.2.2 To mark permanently suspected areas with low impact on development from 2005**
  - **To update L1S contamination from 2005**
  
- *Objective related to mine risk education*
  - **3.3 To strengthen national co-ordination and extend MRE for children with the participation of communities**

- *Objectives related to clearing mined areas*
  - **3.4.1 To prioritise clearance in high impact areas**
  - **3.4.2 To have mine clearance operations integrated in development**
  - **3.4.3 To inform all stakeholders on the contamination and clearance achieved**
  - **3.4.4 To improve cost efficiency of mine clearance as of 2006**
  - **3.4.5 To ensure post-clearance monitoring from 2005**
  - **3.4.6 To comply with the Cambodian Mine Action Standards as of 2005**

➤ *Objective related to Victim Assistance*

**3.5 To develop a coordinated reporting mechanism, a network and an integrated socio economic programme for landmine victims.**

*Clearance Planning*

**All suspected areas by L1S      446,600 ha.**

**10% of the areas are practically impacted**

- **Severe impact areas:            12,270 ha.**
- **High impact areas:                18,000 ha.**
- **Medium impact areas:            10,300 ha.**
- **Low impact areas:                 1,900 ha.**

**Total Areas to be Cleared Ahead: 42,470 ha.**  
**or 424,700,000 m<sup>2</sup>**

### *Progress in 2003*

- CMAC	9,710,000 m <sup>2</sup>	2,400 men
- MAG	2,700,000 m <sup>2</sup>	500 men
- HALO Trust	4,620,000 m <sup>2</sup>	1,100 men
- RCAF	24,350,000 m <sup>2</sup>	2,000 + men

### *Start Planning*

- CMAC	9,710,000 m <sup>2</sup>
- MAG	2,700,000 m <sup>2</sup>
- HALO Trust	4,620,000 m <sup>2</sup>
<b>TOTAL</b>	<b>17,030,000 m<sup>2</sup> per year or</b>

$$18,000,000 \text{ m}^2 \times 25 \text{ y} = 420,000,000 \text{ m}^2$$

$$\text{RCAF, CMAC, HALO, MAG} = 42,000,000 \text{ m}^2 \text{ per year}$$
$$\text{or } 42,000,000 \text{ m}^2 \times 10 \text{ y} = 420,000,000 \text{ m}^2$$



*Scenario 1 – 10-Year-Plan*

<b>FUNDINGS</b>		<b>LAND CLEARED</b>
<b>3 OPS.</b>	<b>\$20,000,000</b>	<b>18,000,000 m<sup>2</sup></b>
<b>RCAF</b>	<b>\$ 7,000,000</b>	<b>24,000,000 m<sup>2</sup></b>
<b>CMAA</b>	<b>\$ 1,000,000</b>	<b>Coordination</b>
<b>TOTAL</b>	<b>\$28,000,000</b>	<b>42,000,000 m<sup>2</sup></b>

**1 Year = 43,000,000 m<sup>2</sup> for 10 Years = 420,000,000 m<sup>2</sup>**

*Scenario 2 – Five-Year-Plan*

<b>FUNDINGS</b>		<b>LAND CLEARED</b>
<b>3 OPS.</b>	<b>\$40,000,000</b>	<b>36,000,000 m<sup>2</sup></b>
<b>RCAF</b>	<b>\$14,000,000</b>	<b>48,000,000 m<sup>2</sup></b>
<b>CMAA</b>	<b>\$ 2,000,000</b>	<b>Coordination</b>
<b>TOTAL</b>	<b>\$56,000,000</b>	<b>84,000,000 m<sup>2</sup></b>

**1 Year = 84,000,000 m<sup>2</sup> for 5 Years = 420,000,000 m<sup>2</sup>**

## CMAA Budget Allocation

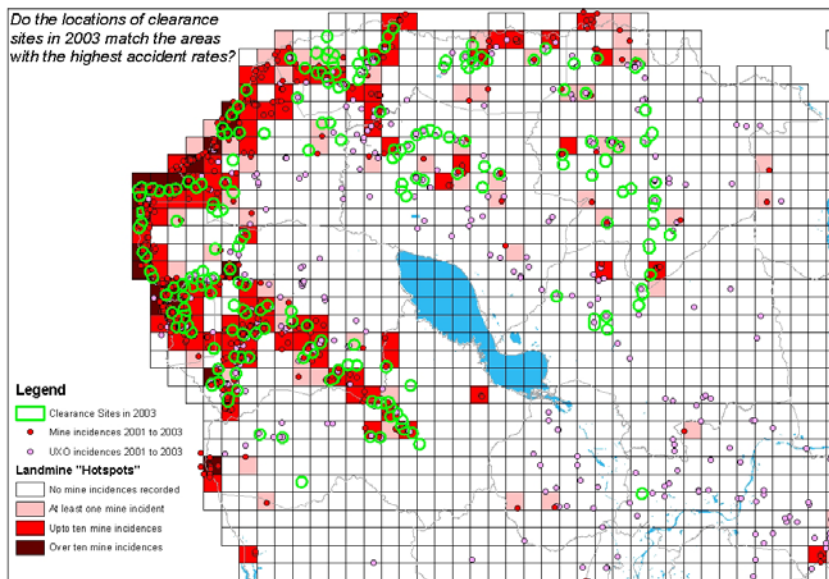
Coordination, Regulation, Planning, Management

• <b>Quality Management and Evaluation</b>	<b>25%</b>
• <b>Socio-Economic Action</b>	<b>15%</b>
• <b>Mine Action Planning</b>	<b>15%</b>
• <b>Information Management, Database</b>	<b>12%</b>
• <b>Regulations &amp; Policies &amp; Compliance</b>	<b>8%</b>
• <b>Mine Awareness &amp; Victim Assistance</b>	<b>5%</b>
• <b>Mine Ban Treaty Compliance</b>	<b>12%</b>
• <b>Projects Management</b>	<b>8%</b>

**TOTAL**

**100%**

## Work plan 2003 Analysis



# National Assessment of Contamination Atlas

